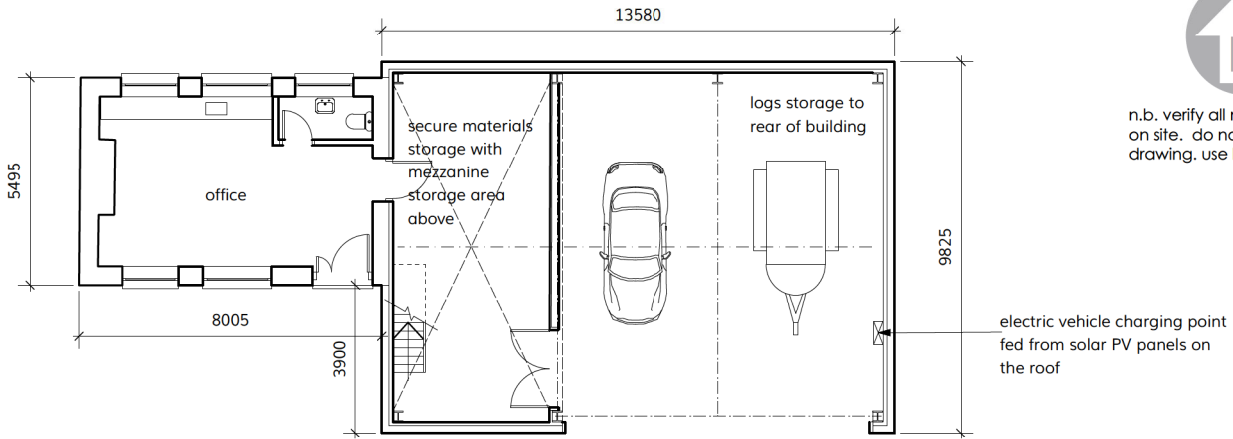


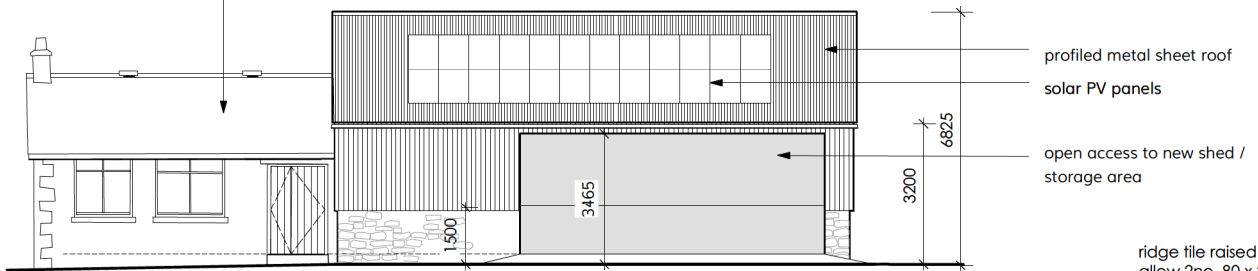
Appendix 6



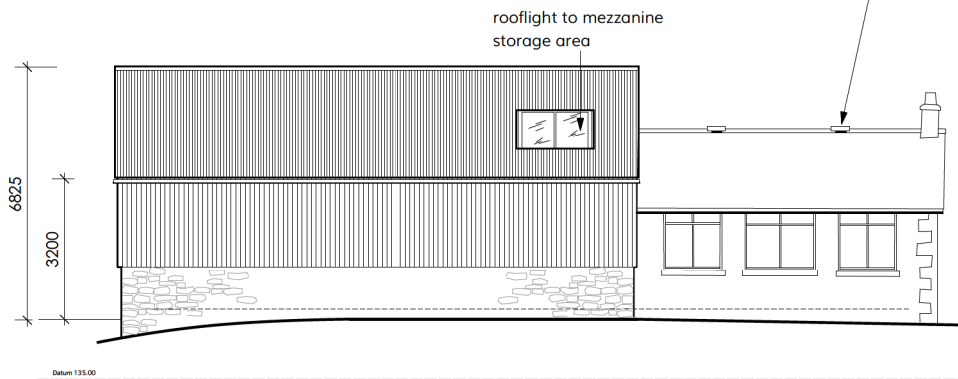
n.b. verify all measurements on site. do not scale from this drawing. use latest revision.



existing workshop / office building to be refurbished and made good. stone built with slate roof



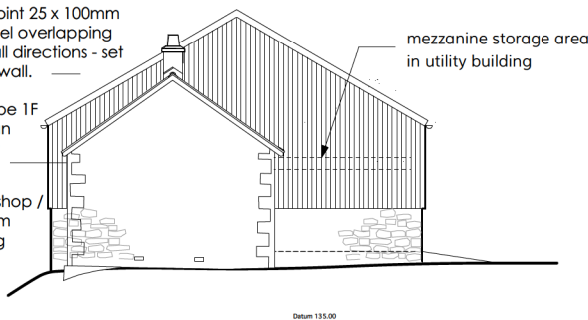
new utility building formed in steel frame with low level course stone wall with Yorkshire boarding above galvanized steel rainwater goods and profiled metal sheet roofing



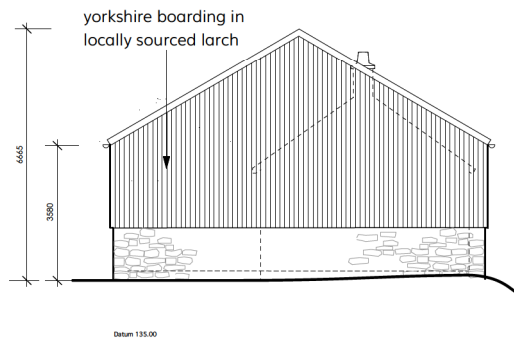
gable bat entry point 25 x 100mm with covering panel overlapping hole by 30mm in all directions - set 30mm off face of wall.

roof felted with Type 1F bitumeastic hessian backed felt cut at bat access points

floor level to workshop / office to be 300mm above surrounding ground levels



4 PROPOSED WORKSHOP NORTH ELEVATION
Scale: 1:100



5 PROPOSED WORKSHOP EAST ELEVATION
Scale: 1:100

FRED COLLIN | architect RIBA
a : Newton Tower
Hallfield Lane, Newton
York YO62 7TW
t : +44 (0) 1439 770518
m : +44 (0) 7971 882310
w : www.fredcollin.com
e : fred@fredcollin.com

job: THE OLD SAWMILL
East Witton

date:
March 2022

scale:
1:100 @A2
1:200 @A4

title: PROPOSED
UTILITY BUILDING/
OFFICE

dwg.no.
131 / 2.05

rev.
A